



CLINICAL EQUIPMENT. COVERED.

Stainless Steel, Metal and Polymer Equipment





# Contents



## About Us

Custom Design	6
Local Manufacturing	8
Warehousing	10
Markets	11

## Product Range

Instrument Trolleys	14
Equipment Trolleys	18
Spectra Trolleys	22
CSSD Equipment	24
Operating Theatre	29
General Ward	33
Maternity	42
Linen & Supply	44
Food Services	49
Consulting Rooms	50

## Index

By Product	54
By Product Code	57





Axis Health's extensive range of equipment continues the tradition of industry leadership offering a significant number of products into the healthcare environment.

We have developed a comprehensive equipment range that combines advanced functionality and contemporary design with quality and reliability. Using a variety of finishes and colour combinations the product range offers unlimited applications throughout the healthcare environment, from the stringent infection control requirements of the operating theatre and CSSD right through to the Aged Care facilities and Consulting Rooms with colour coordinated environments.



# Custom Design



Specialising in the manufacture and supply of medical equipment for the Australian market, Axis Health can work with you on design and provide advice to ensure that you receive the right product for your application.

Detailed consultation with clients ensures not only that products are manufactured exactly to specification, but also allows us to understand and meet the changing needs of the healthcare market. This information feeds through not only to our designers and manufacturers but all key members of our company ensuring that products are made and selected to exceed the expectations of clients.



1

Customer provides detailed information and product requirements.

2

Technical Drawings and a CAD image is provided for the custom item.

3

The CAD drawing is submitted to the customer for approval.

4

Once approved and ordered, manufacture begins.







# Local Manufacturing

As a specialist manufacturer of precision-designed aged care and hospital equipment, Axis Health is known for its unique ability to create innovative healthcare concepts.

- Australian designed and engineered
- Manufactured in Australia in accordance to quality standards ISO9001
- TGA Therapeutic Goods Administration registered
- Local custom design services

# Warehousing & Logistics

In addition to our manufacturing capabilities, we have 3,000 sq/m of high capacity warehousing located in Dandenong South, Melbourne.

This modern facility offers efficiencies with picking, packing and has the capacity to combine large orders to be shipped safely to all locations around Australia.

In addition to warehousing, we have the capability of providing comprehensive logistics services to meet delivery and installation expectations.

- Specialised and dedicated delivery services to all locations
- Product installation services
- Commissioning of -and- training for new products
- Waste removal services





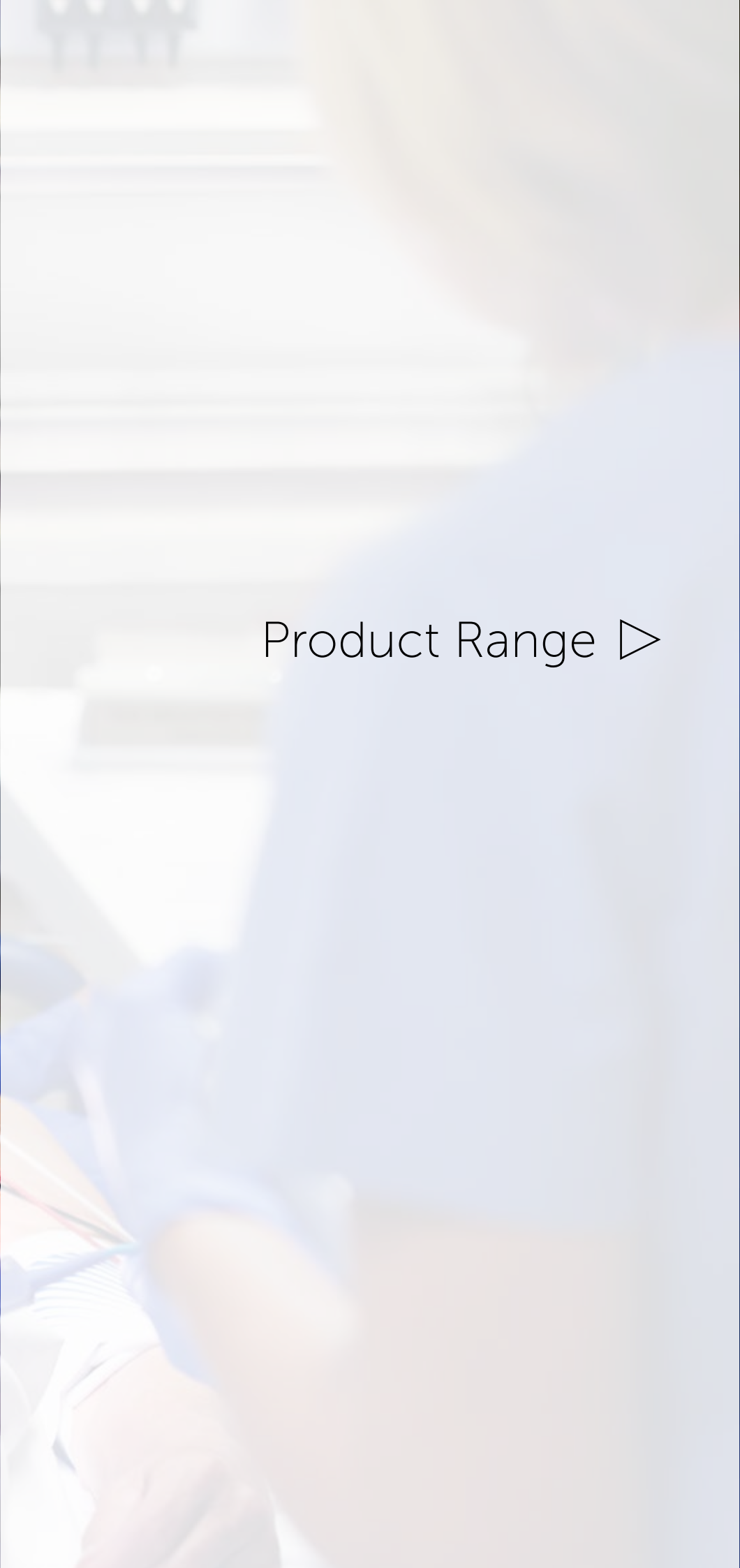
## Markets

The Axis Health Range includes a detailed range of equipment dedicated to the following sectors: Acute Care, Primary Care, and Aged Care.

We have an extremely diverse product portfolio and offer an extensive project management scope with installation, services and commissioning capabilities.



Combining advanced  
functionality and  
contemporary  
design with quality  
and reliability.



Product Range ▷

# Instrument Trolleys

Axis Health instrument trolley design methods are class leaders in providing high quality carts for the surgical and clinical environments.

With a focus on durability features such as double folded safety edges, under shelf bracing and castor mount inserts as standard. These ensure safety and stability at all times.

**Shelf Rails**

12mm stainless steel rails  
Fully welded stainless steel shelf  
Double safety folds to all edges

**Under Shelf Bracing**

Full under bracing providing  
maximum stability and strength

**Stainless Steel Construction**

Satin finish – 304 grade  
stainless steel throughout

**Shelf – Stainless Steel**

Double safety folds to all edges

**Castors**

100mm Precision bearing fork castors  
Soft grey rubber wheel, including 2 locking castors to the front

**Self-closing Drawer Runners**

Full extension, easy glide ball bearing runners  
Automatic self-closing action



NO RAIL



**AX001-G1**  
**Instrument Trolley**  
 490 x 490 x 900mm  
 100mmØ castors; 2 x braking



**AX003-G1**  
**Instrument Trolley**  
 600 x 490 x 900mm  
 100mmØ castors; 2 x braking



**AX006-G1**  
**Instrument Trolley**  
 750 x 490 x 900mm  
 100mmØ castors; 2 x braking

RAIL 3 SIDES



**AX033-G1**  
**Instrument Trolley**  
 490 x 490 x 900mm  
 100mmØ castors; 2 x braking



**AX036 -G1**  
**Instrument Trolley**  
 600 x 490 x 900mm  
 100mmØ castors; 2 x braking



**AX039-G1**  
**Instrument Trolley**  
 750 x 490 x 900mm  
 100mmØ castors; 2 x braking

ONE DRAWER



**AX054-G1**  
**Instrument Trolley**  
 490 x 490 x 900mm  
 Self-closing drawer runners  
 100mmØ castors; 2 x braking



**AX057-G1**  
**Instrument Trolley**  
 600 x 490 x 900mm  
 Self-closing drawer runners  
 100mmØ castors; 2 x braking



**AX060-G1**  
**Instrument Trolley**  
 750 x 490 x 900mm  
 Self-closing drawer runners  
 100mmØ castors; 2 x braking

TWO DRAWER



**AX066-G1**  
**Instrument Trolley**  
 490 x 490 x 900mm  
 Self-closing drawer runners  
 100mmØ castors; 2 x braking



**AX069-G1**  
**Instrument Trolley**  
 600 x 490 x 900mm  
 Self-closing drawer runners  
 100mmØ castors; 2 x braking



**AX072-G1**  
**Instrument Trolley**  
 750 x 490 x 900mm  
 Self-closing drawer runners  
 100mmØ castors; 2 x braking

*Note: All height measurements are to top of shelf*



**AX009-G1****Instrument Trolley**

900 x 490 x 900mm  
100mmØ castors; 2 x braking

*Other models available:*

**AX015-G1** 1000 x 600 x 900mm

**AX018-G1** 1200 x 600 x 900mm

**AX042-G1****Instrument Trolley**

900 x 490 x 900mm  
100mmØ castors; 2 x braking

*Other models available:*

**AX048-G1** 1000 x 600 x 900mm

**AX051-G1** 1200 x 600 x 900mm

**AX063-G1****Instrument Trolley**

900 x 490 x 900mm  
Self-closing drawer runners  
100mmØ castors; 2 x braking

**AX075-G1****Instrument Trolley**

900 x 490 x 900mm  
Self-closing drawer runners  
100mmØ castors; 2 x braking

## MULTI-DRAWER TROLLEYS

**AX076-G1****Instrument Trolley**

490 x 490 x 900mm  
Stainless steel construction  
Self-closing drawer runners  
3 Drawers – 125mm deep  
125mmØ castors; 2 x braking

*Other models available:*

**AX077-G1** 600 x 490 x 900mm  
3 Drawers – 125mm deep

**AX0780-G1** 750 x 490 x 900mm  
3 Drawers – 125mm deep

**AX079-G1** 900 x 490 x 900mm  
3 Drawers – 125mm deep

**AX080-G1****Instrument Trolley**

490 x 490 x 900mm  
Stainless steel construction  
Self-closing drawer runners  
4 Drawers – 125mm deep  
125mmØ castors; 2 x braking

*Other models available:*

**AX081-G1** 600 x 490 x 900mm  
4 Drawers – 125mm deep

**AX082-G1** 750 x 490 x 900mm  
4 Drawers – 125mm deep

**AX083-G1** 900 x 490 x 900mm  
4 Drawers – 125mm deep

**AX073-G1****Instrument Trolley**

900 x 490 x 900mm  
Stainless steel construction  
Self-closing drawer runners  
2 half drawers – 125mm deep  
100mmØ castors; 2 x braking

**AX107-G1****Resuscitation Trolley**

750 x 490 x 900mm  
Stainless construction  
Self-closing drawer runners  
4 half drawers – 125mm deep  
125mmØ castors; 2 x braking



# Equipment Trolleys

The range of Equipment Trolleys is extensive and all trolleys are designed featuring a solid tubular frame which ensures rigidity at all times. This allows the drawers to be mounted securely and to operate efficiently. All drawer runner systems are full ball-bearing extension type featuring a soft self-closing mechanism to prevent the drawer from accidentally opening during transport.

As with the instrument trolleys, the shelves feature double fold and under shelf bracing for a stable work platform. Our range of Equipment Trolleys are available in all stainless steel or can be colour coordinated with powder coated drawers and panels.

All trolleys are fitted with 125mm precision bearing heavy duty castors (2 x locking castors) with optional corner buffers available.



**AX108-G1****Resuscitation Trolley – Standard**

750 x 490 x 900mm  
 Stainless construction  
 Self-closing drawer runners  
 4 Half drawers – 125mm deep  
 1 Full width drawer – 125mm deep  
 Self-closing drawer runner  
 125mmØ castors; 2 x braking

**AX110-G1****Resuscitation Trolley**

750 x 490 x 900mm  
 Stainless construction  
 Self-closing drawer runners  
 6 Half drawers – 125mm deep  
 1 Full width drawer – 250mm deep  
 125mmØ castors; 2 x braking

**AX078-G1****Multi Drawer Trolley**

900 x 490 x 900  
 Stainless steel construction  
 Self-closing drawer runners  
 4 Drawers – 100mm deep  
 2 Drawers – 150mm deep  
 125mmØ castors; 2 x braking

**AX104-G1****Anaesthetic Trolley**

600 x 490 x 1000mm  
 Stainless construction  
 Self-closing drawer runners  
 2 Drawers – 125mm deep  
 2 Drawers – 250mm deep  
 125mmØ castors; 2 x braking

**AX102-G1****Anaesthetic Trolley**

600 x 490 x 900mm  
 Stainless construction  
 Self-closing drawer runners  
 3 Drawers – 125mm deep  
 1 Drawer – 250mm deep  
 125mmØ castors; 2 x braking

**AX105-G1****Anaesthetic Trolley**

900 x 490 x 900mm  
 Stainless construction  
 Self-closing drawer runners  
 6 Full width drawers  
 125mmØ castors; 2 x braking

**AX114-G1** (not pictured)**Anaesthetic Trolley**

600 x 490 x 900mm  
 Stainless construction  
 Self-closing drawer runners  
 5 Full width drawers – 125mm deep  
 125mmØ castors; 2 x braking



**AX117-G1**  
**Emergency Equipment Trolley**  
 750 x 490 x 900mm  
 Stainless steel frame  
 Powder coated panels and drawers  
 Self-closing drawer runners  
 4 Drawers – 105mm deep  
 1 Drawer – 225mm deep  
 125mmØ castors; 2 x braking



**AX115-G1**  
**Emergency Equipment Trolley**  
 750 x 490 x 900mm  
 Stainless steel frame  
 Powder coated panels and drawers  
 Self-closing drawer runners  
 5 Drawers – 125mm deep  
 125mmØ castors; 2 x braking



**AX676-G1**  
**Medication Trolley – 3 Drawer**  
 Stainless construction  
 600 x 490 x 1100mm  
 Lift up shelf  
 Self-closing drawer runners  
 3 Drawers – 275mm deep  
 125mmØ castors; 2 x braking



**AX145-G1**  
**IV Set-up Trolley**  
 900 x 490 x 1122mm  
 Self-closing drawer runners  
 5 Drawers – 125mm deep  
 2 Half drawers – 250mm deep  
 125mmØ castors; 2 x braking



**AX119-G1**  
**Emergency Equipment Trolley**  
 750 x 490 x 1120mm  
 Stainless steel frame  
 Powder coated panels and drawers  
 Self-closing drawer runners  
 3 Drawers – 125mm deep  
 2 Drawers – 250mm deep  
 125mmØ castors; 2 x braking



**AX677-G1**  
**Medication Trolley – 1 Drawer**  
 Powder coated finish  
 600 x 490 x 900mm  
 Self-closing drawer runners  
 1 Webster drawer  
 275mm deep – lockable  
 Lift up shelf  
 100mmØ castors; 2 x braking



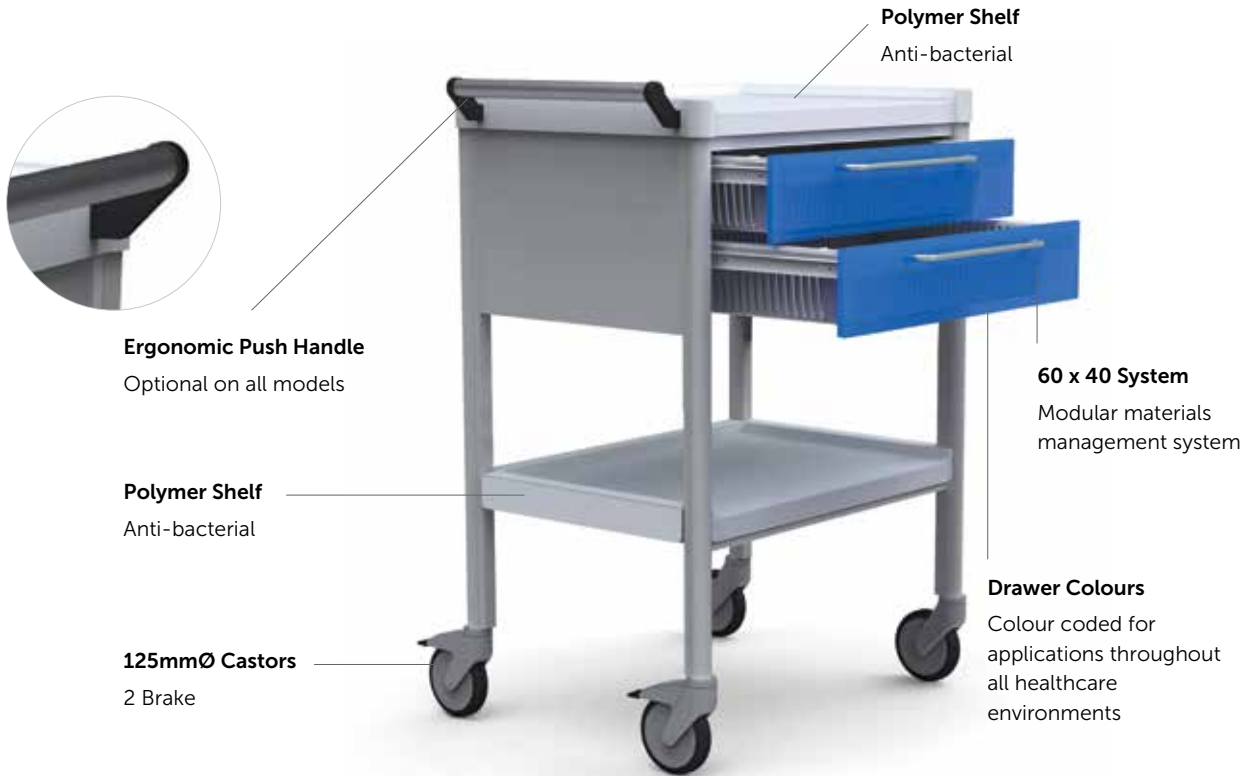
## TROLLEY ACCESSORIES

- A. AX120 Drawer insert containers 12 units / B. AX129 IV pole and clamp / C. AX135 4 x pin power board /  
 D. AX738 Push handle to suit 400mm wide trolley / E. AX132 Storage panel 4 sml; 3 med; 1 lrg /  
 F. AX143 Self closing drawer runner / G. AX126 Drop down work surface /  
 H. AX123 Vertical oxygen bottle holder and clamp / I. AX142 Waste bin and bracket

# Spectra Trolleys

The Spectra range is a trolley system that combines mobility and drawer flexibility into a lightweight colour coded package that has applications throughout all healthcare environments.

The shelves are one piece moulded polymer which are easy to clean and eliminates infection control issues due to the rounded internal mould design, whilst integrating a raised lip to three sides to prevent items falling off.



## 60 x 40 TRAY SYSTEM

The unique drawer systems is based on a removable 60 x 40 tray system that offers three different depths and the option of integrated drawer dividers. This allows flexibility with the trolley applications, particularly in the ability to restock the carts with transfer tray systems.

### 50mm Trays – Transparent

[TTT106405-10101](#)

Tray 50mm Deep 60 x 40

### Dividers – Transparent

[TTT124005-10101](#)

5cm high x 40cm long

[TTT126005-10101](#)

5cm high x 60cm long

### 100mm Trays – Transparent

[TTT106410-10101](#)

Tray 100mm Deep 60 x 40

### Dividers – Transparent

[TTT124010-10101](#)

10cm high x 40cm long

[TTT126010-10101](#)

10cm high x 60cm long

### 200mm Trays – Transparent

[TTT106420-10101](#)

Tray 200mm Deep 60 x 40

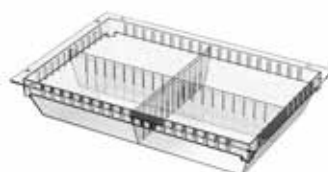
### Dividers – Transparent

[TTT124020-10101](#)

20cm high x 40cm long

[TTT126020-10101](#)

20cm high x 60cm long



## COLOUR OPTIONS

RED

YELLOW

GREEN

BLUE



## TROLLEY MODELS

## STANDARD FEATURES:

700 x 500 x 1000mm

Work surface area 620 x 460mm

125mmØ castors

*Push handle optional on all models*

A. **AXS0001**  
**2 Shelf Trolley**

B. **AXS0010**  
**1 Drawer Trolley**

**TTT106405-10101** 1 x 100mm deep tray  
*Dividers optional*

C. **AXS0020**  
**2 Drawer Trolley**

**TTT106410-10101** 2 x 100mm deep tray  
*Dividers optional*

D. **AXS0030**  
**Multi Drawer Trolley**

**TTT106405-10101** 1 x 50mm deep tray  
**TTT106410-10101** 2 x 100mm deep trays  
**TTT106420-10101** 2 x 200mm deep trays  
*Dividers optional*

A.



B.



C.



D.



*Note: All height measurements are to top of shelf*



## CSSD Equipment





AX0667

**CSSD Workstation**

1500mm Long x 750mm Deep | Height Range: 750 – 1050mm



AX0692

**CSSD Workstation**

2000mm Long x 750mm Deep | Height Range: 750 – 1050mm



AX0693

**CSSD Workstation**

2300mm Long x 750mm Deep | Height Range: 750 – 1050mm

## CSSD WORKSTATIONS

Our range of CSSD workstations and associated equipment are designed with flexibility in mind. A large range of accessories, options and sizes are available and allows the workstation to be configured to meet a multitude of applications, optimising work flow, room layout and departmental efficiency.

The simple push button electric height adjustment ensures that the optimum working height is achieved to ensure correct operator's posture, providing comfort, and minimising occupational health and safety issues.

Construction of all stainless steel, featuring a reinforced heavy duty top surface, ensures infection control issues are minimised. Stable base design ensures stability and provides clear access for operators legs and feet.

### Electric Height Controls

Simple push button controls conveniently located at the corner of the workstation.

Dual column electric height adjustment. Standard height range 750–1050mm. The height range is 300mm.

*Option – Battery back up system*







## CSSD WORKSTATION ACCESSORIES

Our range of CSSD workstations and associated equipment are designed with flexibility in mind. A large range of accessories, options and sizes are available and allows the workstation to be configured to meet a multitude of applications, optimising work flow, room layout and departmental efficiency.

### A. AX0694 | Magnifying Light

- LED Magnifying Lamp 6,000K
- Self-Balancing spring tension 1200mm reach
- Adjustable Table Clamp - allows repositioning

### B. AX0695 | Drawer Unit

- Stainless construction with full extension runners 125mm deep
- Drawer 440mm wide x 400mm deep

### C. AX0696 | Monitor Holder

- Fully adjustable monitor holder with visa mount to suit most screens
- Bracket is height adjustable and can rotate

### D. AX0697 | Under Bench Shelving

- Construction of chrome plated wire, optional stainless steel construction
- Shelving size can be varied depending on the size of table
- Shelf heights can be adjusted

### E. AX0685 | Kinguard Rack

- Can be fitted either side of the workstation
- Removable and telescopic

### F. AX0698 | Accessory Shelf

- Constructed of chrome plated wire
- Shelf depth 300mm
- Single or multiple shelves may be fitted
- Shelves can be positioned at different heights if required

### G. AX0699 | Under Bench Basket System

- 4 x pull out chrome plated baskets
- Baskets are mounted on full extension runners
- Basket size 500 x 400 x 100mm deep

### H. AX0700 | Pull-out Shelf

- Shelf size 1000 x 800mm
- Mounted on heavy duty full extension runners
- Glass shelf, Option of Stainless steel shelf

*Optional - Custom manufactured sink unit*



H.

**AX0684**

**Transportation Trolley**

1200 x 600 x 900mm  
Stainless steel construction  
3 shelves with rails to three sides  
125mmØ castors



**AX0681**

**Kinguard Drying Rack**

1200 x 500 x 1500mm  
Stainless steel construction  
6 rails  
125mmØ castors



**AX692**

**Case Cart**

900 x 600 x 1040mm  
Stainless steel construction  
Fold out hinged doors to 270°  
Internal adjustable wire shelves  
Top rail push handle incorporated  
Full bumper surround  
200mm castorsØ – 2 brake

*In addition to the standard sizes offered, custom sizes are available*



**AX278**

**List Cart**

1200 x 600 x 1430mm  
Stainless steel construction  
2 hinged doors  
Internal adjustable shelves  
200mmØ castors  
Full bumper surround

*In addition to the standard sizes offered, custom sizes are available*



**CASE CART FEATURES**



**Shelf System**

Each unit is supplied with an adjustable shelf system that allows the stainless steel wire shelf to be positioned as required. *Additional shelves are available.*



**Door System**

The doors swing open to a full 270° and ensures full unobstructed access. Flush fitting, heavy duty door latches are fitted. The doors have bracing rods welded to the door perimeter to ensure rigidity and durability.



## Operating Theatre

The GM Medical range of operating theatre equipment has a strong emphasis on being manufactured from stainless steel minimising infection control issues. All products in this range are fully welded and highly polished, therefore easy to clean and maintain.

This diverse range of products covers all clinical and surgical equipment requirements.



**AX106**  
**Airway Trolley**  
 750 x 490 x 900mm  
 Stainless construction  
 Self-closing drawer runners  
 1 Drawer – 125mm deep  
 4 x 125mmØ castors; 2 x locking  
 Clear Acrylic top



**AX4990**  
**Plaster Trolley**  
 900 x 490 x 900mm  
 Stainless construction  
 Self-closing drawer runners  
 2 Drawers – 125mm deep  
 4 x 125mmØ castors; 2 x locking  
 Drop down shelf / bucket hook



**AX252**  
**Mayo Table**  
 Height 820–1120mm  
 Tray size 560 x 410mm  
 Stainless construction  
 2 Leg flat base  
 75mmØ castors



**AX253**  
**Mayo Table**  
 Height 820–1120mm  
 Tray size 560 x 410mm  
 Stainless construction  
 2 Leg slide base  
 75mmØ castors



**AX254**  
**Mayo Table**  
 Height 820–1120mm  
 Tray size 560 x 410mm  
 Stainless construction  
 3 Leg base  
 75mmØ castors



**AX256**  
**Mayo Table**  
 Height 820–1120mm  
 Tray size 560 x 410mm  
 Stainless construction  
 4 Leg base  
 50mmØ castors



**AX021**  
**Nesting Tables – Set of Three**

<b>AX024</b>	Large	1000 x 600 x 900mm
<b>AX027</b>	Medium	940 x 510 x 880mm
<b>AX030</b>	Small	840 x 490 x 840mm



**AX113**  
**Arm Table – Adjustable Height**  
 750 x 490mm  
 Height range 740–1140mm  
 Stainless steel construction  
 Reinforced shelf  
 2 x 75mmØ castors  
 Radiolucent top



**AX260**  
**Lithotomy Table – Adjustable Height**  
 750 x 490mm  
 4 x 75mmØ castors



**AX262**  
**Surgeon Stool Hand Operated**  
 Height 530–710mm  
 No backrest



**AX265**  
**Surgeon Stool Hand Operated**  
 Height 530–710mm  
 Backrest



**AX271**  
**Saddle Stool**  
 Hand operated height adjustment  
 Height range 530–730mm



**AX267**  
**Surgeon Stool Foot Operated**  
 Height 530–710mm  
 No backrest



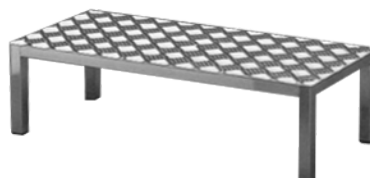
**AX270**  
**Surgeon Stool Foot Operated**  
 Height range 530–710  
 Backrest



**AX391**  
**One Step Stool with hand rail**  
 Aluminium tread plate  
 700 x 300 x 200mm  
 Handle height: 1000mm



**AX387**  
**One Step Stool**  
 400 x 300 x 200mm  
 Stainless steel frame  
 Aluminium tread plate



**AX390**  
**One Step Stool**  
 700 x 300 x 200  
 Stainless steel frame  
 Aluminium tread plate



**AX405**  
**Two Step Stool**  
 Step Height: 200 / 400mm  
 Stainless steel frame  
 Aluminium tread plate

**AX214**

**Double Bowl Stand**

Height 820mm  
 Ø 300mm  
 Stainless steel bowl



**AX211**

**Single Bowl Stand**

Height 820mm  
 Ø 300mm  
 Stainless steel bowl



**AX248**

**Elevated Bucket Stand**

Height 515mm  
 Ø 300mm  
 Stainless steel bowl  
 11.4 L



**AX240**

**Kick Bucket Stand**

Bucket and stand combination  
 Stainless steel construction.

Separate components:

- AX241** Kick Bucket Stand
- AX244** Kick Bucket – 11.4 L
- AX247** Kick Bucket Lid



**AX764**

**ICU Work Station**

Writing surface: 900 x 620mm – tilting  
 Height range: 700 –1000mm  
 All stainless steel construction  
 Storage basket system  
 470 x 400 x 350mm deep  
 2 compartments 320 x 200  
 1 compartment 150 x 400  
 100mmØ castors; 2 brake



**AX765**

**ICU Work Station**

Writing surface: 870 x 670mm – tilting  
 Height range: 700 –1000mm  
 Laminated work surface  
 Stainless steel frame  
 2 Stainless steel drawers 125mm deep  
 100mmØ castors with brake



**AX701**

**ICU Work Station**

Writing surface: 750 x 620mm – tilting  
 Height range: 700–1000mm  
 Powder coated  
 Laminated work surface  
 75mmØ castors; 2 x front brakes



**AX636**

**Theatre Supply Storage Cart**

6 Swing out baskets – 2 fixed at rear  
 Laminated top  
 4 x 100mmØ twin castors







## General Ward

This range of equipment is engineered for strength and durability to withstand continuous use year after year. A blend of different materials and finishes are used throughout the range.

All products are fully welded for maximum rigidity and are supported by a full 2 year warranty. A choice of all stainless steel or colour coordinated powder coating is available.

**A. AX2380SS**

**Provita Smart IV Stand**

One hand operation  
 Height range 1300–2100mm  
 Stable five star weighted base  
 4 hook IV holder  
 Colour coordinated  
 Aqua seal  
 80mmØ castors



**B. AX217**

**IV Pole / Stand**

Height range 1350–2050mm  
 Stainless steel construction  
 5 Leg weighted base  
 50mmØ twin castors



**C. AX219**

**IV Pole / Stand – Heavy Base**

Height range 1350–2050mm  
 Stainless steel construction  
 5 Leg weighted base  
 50mmØ twin castors



**D. AX216**

**IV Pole / Stand**

Polymer Base  
 Height range 1350–2100mm  
 5 Leg base



**E. AX220**

**IV Transfusion Pump Stand**

Height range 1350–2100mm  
 Offset pole for stability  
 Push handle



**F. AX218**

**Stackable IV Pole**

Stackable, space-saving base  
 Stainless steel construction



**IV STAND ACCESSORIES**



**AX231**  
 Storage Basket and Clamp



**AX233**  
 IV Handle and Clamp



**AX232**  
 Vertical Oxy Holder and Clamp

## G SIZE



## D SIZE



## C SIZE

**Oxygen Bottle Trolley G Size**

150mm castors

AX528 Epoxy coated  
AX531 Stainless steel

**Oxygen Bottle Trolley D Size**

150mm castors

AX546 Epoxy coated  
AX549 Stainless steel

**Oxygen Bottle Trolley C Size**

150mm castors

AX537 Epoxy coated  
AX540 Stainless steel



AX524

**Gas Cylinder Trolley**

Multi Stack  
Capacity 9 x C size cylinders  
Powder coated finish



AX525

**Gas Cylinder Trolley**

Multi Stack  
Capacity 12 x C size cylinders  
Powder coated finish



AX524SS

**Gas Cylinder Trolley**

Multi Stack  
Capacity 9 x C size cylinders  
Stainless steel construction



AX525SS

**Gas Cylinder Trolley**

Multi Stack  
Capacity 12 cylinders  
6 x C size / 6 x D size  
Stainless steel  
construction



AX519

**Garbage Trolley –  
Foot Operated**

Foot operated lid action  
Stainless construction / PVC lid  
75mmØ castors  
400 x 500 x 930mm high



AX518

**Garbage Trolley –  
Foot Operated**

Foot operated lid action  
Stainless construction / PVC lid  
50mmØ castors  
375 x 300 x 845mm high



AX520NL

**Garbage Trolley**

Elastic rubber ring bag retainer  
50mmØ castors  
875 x 300 x 845mm high



**AX990**  
**Charts Trolley – 12 Charts**  
465 x 530 x 900mm  
Stainless steel construction  
125mmØ castors; 2 x locking

**AX996**  
**Chart Holder A4**  
To suit Charts Trolleys  
310 x 265mm



**AX993**  
**Charts Trolley – 24 Charts**  
805 x 530 x 900mm  
Stainless steel construction  
125mmØ castors; 2 x locking

**AX994**  
**Charts Trolley – 36 Charts**  
1170 x 530 x 900mm  
*(not pictured)*



**AX177**  
**Lead Apron Rack**  
700 x 600 x 1420mm  
Stainless steel construction  
12 apron hooks  
Corner buffers  
125mmØ castors



**AX175**  
**Garment Rack**  
1600 x 600 x 1600mm  
Stainless steel construction

**AX178** *(not pictured)*  
**Coat Hangers**

**AX554****Pan and Bottle Rack – 4**

Capacity 4 pans / 5 bottles  
 Stainless steel construction  
 Includes drip tray and back plate

**AX552****Pan and Bottle Rack – 6**

Capacity 6 pans / 7 bottles  
 Stainless steel construction  
 Includes drip tray and back plate

**AX501****Bed Cradle**

Tubular frame  
 Stainless steel construction

**AX543****Gas Bottle Holder**

Stainless steel  
 150mmØ x 330mm  
 Hook over design  
 Suits C size cylinder  
 12mmØ rod to hook into trolley or bed

**AX534****Gas Bottle Holder**

Stainless steel  
 130 x 130 x 350mm  
 Hook over design  
 Suit C size oxygen bottle  
 Sheet Metal

**AX513****Urinal Bottle Holder**

Stainless Steel

**AX510****Urinal Bottle Holder**

Nylon Coated



## SHOWER CHAIR



### AX432

#### Shower Chair (pictured above)

The shower chair offers a three position drop down armrest, a non-slip retracting footrest fitted with an anti-tilt bracket and comes with a seamless, soft padded seat and backrest. The shower chair's slim line design is made of stainless steel and is fitted with water resistant precision bearing castors which offers excellent manoeuvrability.

#### Features

- Seat width 440mm
- Seamless padded seat and backrest
- Bed pan holder
- Padded arm rest
- Locking castors
- Stainless steel construction

#### Options

- Oxygen cylinder holder and clamp
- IV pole and clamp
- Hinged seat
- Safety arms – wrap around

**AX432SA****Shower Chair**

Swing back arms  
Safe working load: 125kg

**AX433****Shower Chair**

Seat width 600mm  
Drop arms  
Weight capacity 175kg

**AX435****Bariatric Shower Chair**

Seat width 600mm  
Swing back arms  
Weight capacity 350kg  
Heavy duty frame  
Reinforced seat and backrest

## ACCESSORIES

**AX436** Hinged Padded Seat (Not Pictured)

**AX438** Padded Enclosed Seat (Not Pictured)

**AX441** Padded Open Front Seat (Not Pictured)

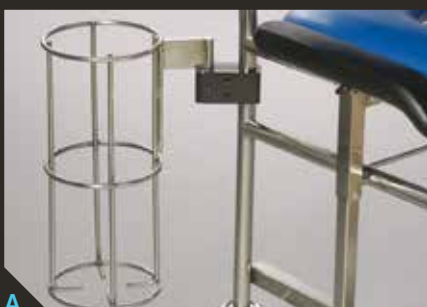
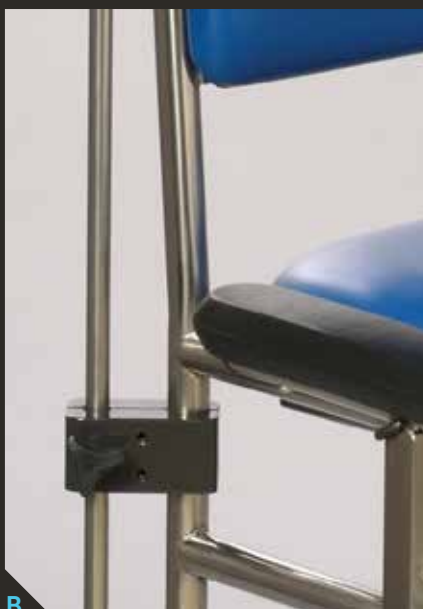
**AX444** Padded Backrest (Not Pictured)

**A. AX462** Oxygen Cylinder Holder & Clamp

**B. AX460** IV Pole and Clamp

**C. AX455** Safety Arms – Wrap Around

**D. AX447** Leg Extension

**A.****B.****C.****D.**

## MORTUARY LIFTERS

The Rapini Mortuary Lifter Trolleys are designed for the movement of cadavers to and from the mortuary unit for placement or viewing.

### AX703

#### Mortuary Lifter Trolley

Size 2200 x 650mm

Height range 450–1450mm

Stainless steel construction

Hi low function electrically operated by hand controller

Battery back up for transportation

200mmØ castors / 3 brake / 1 steer



### AX704

#### Hi Low Mortuary / Concealment Trolley

2200 x 650mm

Height range 450–1450mm

Stainless steel construction

Hi low function electrically operated by hand controller

Battery back up for transportation

Removable side rails and end rails

200mmØ castors / 3 brake / 1 steer



### AX707

#### Mortuary / Concealment Trolley Cover

To suit AX704





## DOCUMENT HOLDERS

GM document holders offer a variety of configurations for the effective storage of files, binders and documents.

The range offers the following options:

- Landscape positioning
- Portrait positioning
- Multiple document holders
- Magnetic mounting option
- Clear or dark tinted options
- Unbreakable polycarbonate construction for some models

<b>A. AX9144</b>	260 x 254 x 102mm
<b>B. AX9142</b>	254 x 267 x 51mm
<b>C. AX9140</b>	445 x 165 x 76mm
<b>D. AX9136</b>	368 x 165 x 76mm
<b>E. AX9146</b>	375 x 178 x 102mm



## TILT BINS



- Modular units with stackable design
- Manufactured using High Impact Polystyrene Plastic (HIPS)
- Transparent bins keep supplies visible
- Supplied with product bin labels for easy identification

<b>A. AX9122</b>	6 Units
<b>B. AX9124</b>	5 Units
<b>C. AX9126</b>	4 Units
<b>D. AX9128</b>	3 Units



## Maternity

The GM range of Maternity products provide for varying conditions of infants, including the ability to bathe. Our range features a twin bassinet which assists in the bonding of the newborns.

With Occupational Health and Safety issue being at the forefront we offer 2 types of variable height bassinets units that offer simple electrically controlled height adjustments with a convenient hand control. This ensures safe, secure handling and treatment of the infant.



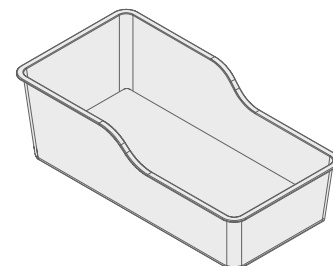
**AX609**  
**Single Bassinet Trolley –**  
**Adjustable Height**

790 x 420mm  
 Height 800–1100mm  
 Electrically operated by hand controller/  
 battery back up  
 Includes acrylic tub, mattress and 1 x  
 swing out basket



**AX610**  
**Babies Bath –**  
**Adjustable Height**

790 x 420mm  
 Height 800–1100mm  
 Stainless steel construction  
 Electrically operated by hand controller /  
 battery back up  
 Includes acrylic tub with waste outlet  
 connection and hose 1 x swing out basket



**AX611**  
**Acrylic tub only**



**AX582**  
**Bassinet Trolley – Single**

800 x 415 x 910mm  
 Includes acrylic tub and mattress  
 2 x white storage trays  
 Powder coated frame



**AX597**  
**Bassinet Trolley – Twin**

800 x 610 x 910mm  
 Includes acrylic tub and mattress  
 2 x white storage trays  
 Powder coated frame



**AX612**  
**Bassinet Trolley – Cabinet**

800 x 415 x 910mm  
 Cabinet with internal adjustable shelf  
 Includes acrylic tub and mattress

**AX607**  
**Stainless steel frame**

**AX608**  
**Stainless steel frame**



## Linen & Supply

This extensive range of equipment offers handling and transport solutions for linen and other supplies within the healthcare environment. Engineered to withstand heavy loads and frequent use, we have designed these products to be ergonomic and easy to use.

All equipment is fully welded and has a sturdy frame design for maximum durability and is constructed from stainless steel or durable powder coated steel.

**AX291****Single Linen Skip – Foot operated lid**

380 x 540 x 850mm  
 Stainless steel construction  
 Foot operated PVC lid  
 75mmØ castors

**AX300****Double Linen Skip – Foot operated lid**

780 x 540 x 850mm  
 Stainless steel construction  
 Foot operated PVC lid  
 75mmØ castors

*Foot operated lid**Swivel hooks***AX315****Swivel Hooks – Optional**

4 hooks per linen bag ring available  
 on all linen skips in the range

**AX307****Triple Linen Skip – Foot operated lid**

1170 x 540 x 850mm  
 Stainless steel construction  
 Foot operated PVC lid  
 75mmØ castors

**Colour Identification Strips**

Apply to PVC lid for colour coding  
*(all models)*

AX318R	Red	
AX318B	Blue	
AX318G	Green	
AX318Y	Yellow	



**AX303**  
**Triple Linen Skip – No lid**  
 1170 x 540 x 850mm  
 Stainless steel construction  
 75mmØ castors



**AX294**  
**Double Linen Skip – No lid**  
 780 x 540 x 850mm  
 Stainless steel construction  
 75mmØ castors



**AX286**  
**Single Linen Skip – No lid**  
 380 x 540 x 850mm  
 Stainless steel construction  
 75mmØ castors



**AX307 PC**  
**Triple Linen Skip**  
 1170 x 540 x 850mm  
 Powder coated finish  
 Foot operated PVC lid  
 75mmØ castors



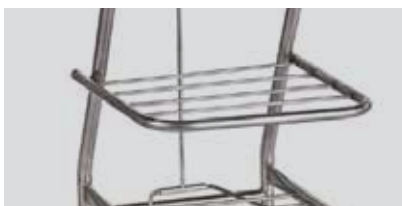
**AX300 PC**  
**Double Linen Skip**  
 780 x 540 x 850mm  
 Powder coated finish  
 Foot operated PVC lid  
 75mmØ castors



**AX291 PC**  
**Single Linen Skip**  
 380 x 540 x 850mm  
 Powder coated finish  
 Foot operated PVC lid  
 75mmØ castors



**AX315** Swivel hooks



**AX320** Optional half height shelf only



**AX300HHS**  
**Double Linen Skip with Shelf**  
 Includes half height shelf



**AX320HHS**  
**Single Linen Skip with Shelf**  
 Includes half height shelf



**AX729**  
**Moist Laundry Trolley**

Including spring loaded base  
320 litre capacity



**AX726**  
**Wet and Dry Laundry Trolley**

1000 x 650 x 820mm  
Including spring loaded base



**AX733**  
**Moist Laundry Trolley**

Including spring loaded base  
450 litre capacity



**AX091**  
**Utility Trolley**

720 x 450 x 910mm  
Stainless steel frame  
2 lift out tubs – 200mm deep  
125mmØ castors



**AX094**  
**Storage Trolley**

700 x 450 x 1300mm  
Stainless steel frame  
4 slide out tubs – 200mm deep  
125mmØ castors



**AX634**  
**Bulk Collection Trolley**

Removable tray  
Stainless steel construction  
125mmØ castors



**AX731**  
**Spring loaded base only**



**AX190SS**  
**Imprest Trolley**  
 1270 x 630 x 1330mm  
 Stainless Steel  
 4 Shelves  
 Mesh sides and back  
 Full bumper surround  
 200mmØ castors  
*Available with 6 shelves*



**AX190**  
**Imprest Trolley**  
 1270 x 630 x 1330mm  
 Powder coated finish  
 4 Shelves  
 Mesh sides and back  
 Full bumper surround  
 200mmØ castors  
*Available with 6 shelves*



**AX191**  
**Imprest Trolley**  
 1270 x 630 x 1330mm  
 Powder coated finish  
 4 Shelves  
 Enclosed sides and back  
 Full bumper surround  
 200mmØ castors  
*Available with 6 shelves*



**AX723**  
**Personal Distribution Trolley**  
 960 x 680 x 1310mm  
 Powder coated frame 20 bays  
 20 individual tubs included  
 Additional sizes available



**AX199**  
**Removable Basket Trolley**  
 750 x 490 x 900mm  
 Nylon coated baskets – 200mm deep  
 Push handle  
 125mmØ castors



**AX205**  
**Fixed Basket Trolley**  
 750 x 490 x 900mm  
 Nylon coated baskets – 200mm deep  
 Push handle  
 125mmØ castors

**BASK0202**  
 Replacement Basket



**R2530**  
**Residents Clothing Distribution Trolley**  
 Multi compartment trolley designed for distribution of personal linen for residents.  
 Features double sided access. Comprises shelf ledges, vertical rods, hanging rods and push handle.

- Sizes available:
- R2500** 16 compartment
  - R2510** 18 compartment
  - R2520** 24 compartment
  - R2530** 32 compartment (pictured)



# Food Services



**AX658**  
**Light Weight Tray Trolley**

1 x 10 capacity  
Tubular stainless steel construction  
150mmØ castors  
Protective buffers  
460 x 560 x 1630mm



**AX662**  
**Light Weight Tray Trolley**

2 x 10 capacity  
Tubular stainless steel construction  
150mmØ castors  
Protective buffers  
895 x 560 x 1630mm



**AX665**  
**Light Weight Tray Trolley**

3 x 10 capacity  
Tubular stainless steel construction  
150mmØ castors  
Protective buffers  
1329 x 560 x 1630mm



**AX147**  
**Clearing Trolley**  
**2 dished shelves**

900 x 490 x 900mm  
Stainless steel construction  
125mmØ castors  
Protective buffers



**AX150**  
**Clearing Trolley**  
**3 dished shelves**

900 x 490 x 900mm  
Stainless steel construction  
125mmØ castors  
Protective buffers



**AX625**  
**Clearing Trolley**  
**2 flat shelves**

900 x 490 x 900mm  
Stainless steel construction  
125mmØ castors  
Protective buffers



**AX627**  
**Clearing Trolley**  
**3 flat shelves**

900 x 490 x 900mm  
Stainless steel construction  
125mmØ castors  
Protective buffers



**AX654**  
**Mobile Preparation Table**

1200 x 760 x 900mm  
Stainless construction  
125mmØ braking castors

*Other size available:*

**AX651**  
1500 x 760 x 900mm

**AX648**  
1800 x 760 x 900mm

## Static Units

**AX645**  
1200 x 760 x 900mm

**AX642**  
1500 x 760 x 900mm

**AX639**  
1800 x 760 x 900mm

# Consulting Rooms



Our consulting room range offers an extensive selection of product options to accommodate all types of consulting rooms as well as coordinating with the surrounding decor. The inclusion of fully electrically operated examination couches addresses patient safety for ingress and egress to the couch and allows flexibility for the physician to treat the patient at a comfortable height.

The options of stainless steel or colour coordinated powder coated equipment is available and accommodates different price levels.

## AX357G Examination Couch

- Fixed height
- 1810 x 600 x 820mm
- Adjustable head section
- Tubular frame



## AX381 Paper Roll Holder

To suit all models of Examination Couches



## AX385 Examination Couch Heavy Duty

- 1810 x 760 x 820mm
- Adjustable head section
- Reinforced frame structure
- SWL 250kg

## AX382 3 Drawer Unit (optional)

Modular drawer unit to suit couch AX385  
Drawers mounted under frame





**AX375G**  
**One Step Stool**  
 Step height 230mm  
 Epoxy coated non-slip tread



**AX393G**  
**Two Step Stool**  
 Step height 230mm  
 Epoxy coated non-slip tread



**AX378**  
**One Step Stool with hand rail**  
 Step height 250mm  
 Epoxy coated non-slip tread  
 Handle to one end



**AX402RHR – Right**  
**Two Step Stool with hand rail**  
 Step heights 200 / 400mm  
 Epoxy coated non-slip tread  
 Hand rail available left or right

**AX402LHR – Left**



**AX321**  
**Instrument Trolley**  
 490 x 490 x 900mm



**AX324**  
**Instrument Trolley – 1 Drawer**  
 490 x 490 x 900mm



**AX327**  
**Instrument Trolley – 2 Drawer**  
 490 x 490 x 900mm

**POWDER COATED  
 INSTRUMENT TROLLEYS**



**AX330**  
**Instrument Trolley**  
 750 x 490 x 900mm



**AX333**  
**Instrument Trolley – 1 Drawer**  
 750 x 490 x 900mm



**AX336**  
**Instrument Trolley – 2 Drawer**  
 750 x 490 x 900mm

*Note: All height measurements are to top of shelf*

**NOVA**  
INSTRUMENT TROLLEYS



**AX342**  
**Instrument Trolley**  
490 x 490 x 900mm  
Powder coated finish  
Stainless steel shelves



**AX345**  
**Instrument Trolley – 1 Drawer**  
490 x 490 x 900mm  
Powder coated finish  
Stainless steel shelves  
Polymer drawer



**AX348**  
**Instrument Trolley – 2 Drawer**  
490 x 490 x 900mm  
Powder coated finish  
Stainless steel shelves  
Polymer drawers



**AX349**  
**Instrument Trolley – 3 Drawer**  
490 x 490 x 900mm  
Powder coated finish  
Stainless steel shelves  
Polymer drawers

**STAINLESS STEEL**  
INSTRUMENT TROLLEYS



**AX033**  
**Instrument Trolley**  
490 x 490 x 900mm  
Stainless steel construction  
75mmØ castors; 2 x locking



**AX054**  
**Instrument Trolley – 1 Drawer**  
490 x 490 x 900mm  
Stainless steel construction  
Self-closing drawer runners  
75mmØ castors; 2 x locking



**AX066**  
**Instrument Trolley – 2 Drawer**  
490 x 490 x 900mm  
Stainless steel construction  
Self-closing drawer runners  
75mmØ castors; 2 x locking



**AX076**  
**Instrument Trolley – 3 Drawer**  
490 x 490 x 900mm  
Stainless steel construction  
Self-closing drawer runners  
125mmØ castors; 2 x locking

*Note: All height measurements are to top of shelf*



**AX468**

**Blood Collection Chair**

800 x 1050 x 750mm  
Powder coated finish



**AX473**

**Blood Collection Chair**

Stainless steel Sliding Footrest  
800 x 1050 x 750mm  
Powder coated finish



**AX262**

**Surgeon Stool Hand Operated**

Height 530–710mm  
No backrest



**AX265**

**Surgeon Stool Hand Operated**

Height 530–710mm  
Backrest



**AX2711**

**Saddle Stool**

Hand operated height adjustment  
Height range 530–730mm

**AX420**

**Privacy Screen 2 fold**

Panel size 900 x 1400mm  
Unfolded 1800 x 1700mm  
Powder coated frame  
Includes curtains

**AX423CURT**

**Replacement curtain 2 fold**

**AX411**

**Privacy Screen 3 fold**

Panel size 900 x 1400mm  
Unfolded 2700 x 1700mm  
Powder coated frame  
Includes curtains

**AX414CURT**

**Replacement curtain 3 fold**



*2 Fold*



*3 Fold*

# Index By Product

(A) = Accessory

PRODUCT	CODE	(A) SECTION	PG
<b>A</b>			
Acrylic Tub Only	AX611	Maternity	43
Airway Trolley	AX106	Operating Theatre	30
Anaesthetic Trolley	AX104-G1	Equipment Trolleys	19
Anaesthetic Trolley	AX102-G1	Equipment Trolleys	19
Anaesthetic Trolley	AX114-G1	Equipment Trolleys	19
Anaesthetic Trolley	AX105-G1	Equipment Trolleys	19
Arm Table	AX113	Operating Theatre	30
<b>B</b>			
Babies Bath	AX610	Maternity	43
Bariatric Shower Chair	AX435	General Ward	39
Bassinet Trolley – Cabinet	AX612	Maternity	43
Bassinet Trolley – Single	AX609	Maternity	43
Bassinet Trolley – Single	AX582	Maternity	43
Bassinet Trolley – Single Stainless Steel Frame	AX607	Maternity	43
Bassinet Trolley – Twin	AX597	Maternity	43
Bassinet Trolley – Twin Stainless steel frame	AX608	Maternity	43
Bed Cradle	AX501	General Ward	37
Blood Collection Chair	AX468	Consulting Room	53
Blood Collection Chair	AX473	Consulting Room	53
Bulk Collection Trolley	AX634	Linen & Supply	47
<b>C</b>			
Case Cart	AX692	CSSD	28
Chart Holder A4	AX996	General Ward	36
Charts Trolley – 12 Charts	AX990	General Ward	36
Charts Trolley – 24 Charts	AX993	General Ward	36
Charts Trolley – 36 Charts	AX994	General Ward	36
Clearing Trolley – 2 break shelves	AX625	Food Services	49
Clearing Trolley – 2 dished shelves	AX147	Food Services	49
Clearing Trolley – 3 break shelves	AX627	Food Services	49
Clearing Trolley – 3 dished shelves	AX150	Food Services	49
Coat Hangers	AX178	General Ward	36
CSSD Workstation – 1500mm long	AX0667	CSSD	25
CSSD Workstation – 2000mm long	AX0692	CSSD	25
CSSD Workstation – 2300mm long	AX0693	CSSD	25
CSSD Workstation Magnifying Light	AX0694	(A) CSSD	27
CSSD Workstation Drawer Unit	AX0695	(A) CSSD	27
CSSD Workstation Monitor Holder	AX0696	(A) CSSD	27
CSSD Workstation Under Bench Shelving	AX0697	(A) CSSD	27
CSSD Workstation Kimguard Rack	AX0685	(A) CSSD	27
CSSD Workstation Accessory Shelf	AX0698	(A) CSSD	27
CSSD Workstation Underbench Basket System	AX0699	(A) CSSD	27
CSSD Workstation Pull-out shelf	AX0700	(A) CSSD	27
<b>D</b>			
Distribution Trolley	AX723	Linen & Supply	48
Distribution Trolley 16 compartment	R2500	Linen & Supply	48
Distribution Trolley 18 compartment	R2510	Linen & Supply	48

PRODUCT	CODE	(A) SECTION	PG
Distribution Trolley 24 compartment	R2520	Linen & Supply	48
Distribution Trolley 32 compartment	R2530	Linen & Supply	48
Document Holders	AX9144	General Ward	41
Document Holders	AX9142	General Ward	41
Document Holders	AX9140	General Ward	41
Document Holders	AX9136	General Ward	41
Document Holders	AX9146	General Ward	41
Double Bowl Stand	AX214	Operating Theatre	32
Double Linen Skip	AX300	Linen & Supply	45
Drawer insert containers 12 units	AX120	(A) Equipment Trolleys	21
Drop down work surface	AX126	(A) Equipment Trolleys	21

**E**

Emergency Equipment Trolley	AX117-G1	Equipment Trolleys	20
Emergency Equipment Trolley	AX115-G1	Equipment Trolleys	20
Emergency Equipment Trolley	AX119-G1	Equipment Trolleys	20
Examination Couch	AX357G	Consulting Room	50
Examination Couch 3 Drawer Unit	AX382	Consulting Room	50
Examination Couch Heavy Duty	AX385	Consulting Room	50

**F**

Fixed Basket Trolley	AX205	Linen & Supply	48
----------------------	-------	----------------	----

**G**

Garbage Trolley	AX519	General Ward	35
Garbage Trolley	AX520	General Ward	35
Garbage Trolley	AX520NL	General Ward	35
Garment Rack	AX175	General Ward	36
Gas Bottle Holder	AX543	General Ward	37
Gas Bottle Holder	AX534	General Ward	37
Gas Cylinder Trolley – 12 x	AX525	General Ward	35
Gas Cylinder Trolley – 9x	AX524	General Ward	35
Gas Cylinder Trolley Stainless Steel – 12 x	AX525SS	General Ward	35
Gas Cylinder Trolley Stainless Steel – 9x	AX524SS	General Ward	35

**H**

Hinged Padded Seat	AX436	(A) General Ward	39
--------------------	-------	------------------	----

**I**

ICU Workstations 900 X 620mm writing surface	AX764	Operating Theatre	32
ICU Workstations 870 x 670mm writing surface	AX765	Operating Theatre	32
ICU Workstations 750 x 620mm writing surface	AX701	Operating Theatre	32
Imprest Trolley	AX191	Linen & Supply	48
Imprest Trolley Mesh Powder Coat	AX190	Linen & Supply	48
Imprest Trolley Mesh Stainless Steel	AX190SS	Linen & Supply	48
Instrument Trolley 1 Drawer – Nova	AX345	Consulting Room	52
Instrument Trolley 1 Drawer – Powder Coated	AX324	Consulting Room	51
Instrument Trolley 1 Drawer – Powder Coated	AX333	Consulting Room	51
Instrument Trolley 2 Drawer – Nova	AX348	Consulting Room	52
Instrument Trolley 2 Drawer – Powder Coated	AX327	Consulting Room	51
Instrument Trolley 2 Drawer – Powder Coated	AX336	Consulting Room	51
Instrument Trolley 3 Drawer – Nova	AX349	Consulting Room	52

PRODUCT	CODE	(A) SECTION	PG
Instrument Trolley – Four Drawer	AX080-G1	Instrument Trolleys	16
Instrument Trolley – Four Drawer	AX081-G1	Instrument Trolleys	16
Instrument Trolley – Four Drawer	AX082-G1	Instrument Trolleys	16
Instrument Trolley – Four Drawer	AX083-G1	Instrument Trolleys	16
Instrument Trolley – No Rail	AX001-G1	Instrument Trolleys	16
Instrument Trolley – No Rail	AX003-G1	Instrument Trolleys	16
Instrument Trolley – No Rail	AX006-G1	Instrument Trolleys	16
Instrument Trolley – No Rail	AX009-G1	Instrument Trolleys	16
Instrument Trolley – No Rail	AX015-G1	Instrument Trolleys	16
Instrument Trolley – No Rail	AX018-G1	Instrument Trolleys	16
Instrument Trolley – Nova	AX342	Consulting Room	52
Instrument Trolley – One Drawer	AX054-G1	Instrument Trolleys	16
Instrument Trolley – One Drawer	AX057-G1	Instrument Trolleys	16
Instrument Trolley – One Drawer	AX060-G1	Instrument Trolleys	16
Instrument Trolley – One Drawer	AX063-G1	Instrument Trolleys	16
Instrument Trolley – Powder Coated	AX321	Consulting Room	51
Instrument Trolley – Powder Coated	AX330	Consulting Room	51
Instrument Trolley – Rail 3 Sides	AX033-G1	Instrument Trolleys	16
Instrument Trolley – Rail 3 Sides	AX036-G1	Instrument Trolleys	16
Instrument Trolley – Rail 3 Sides	AX039-G1	Instrument Trolleys	16
Instrument Trolley – Rail 3 Sides	AX042-G1	Instrument Trolleys	16
Instrument Trolley – Rail 3 Sides	AX048-G1	Instrument Trolleys	16
Instrument Trolley – Rail 3 Sides	AX051-G1	Instrument Trolleys	16
Instrument Trolley – Three Drawer	AX076-G1	Instrument Trolleys	16
Instrument Trolley – Three Drawer	AX077-G1	Instrument Trolleys	16
Instrument Trolley – Three Drawer	AX0780-G1	Instrument Trolleys	16
Instrument Trolley – Three Drawer	AX079-G1	Instrument Trolleys	16
Instrument Trolley – Two Drawer	AX066-G1	Instrument Trolleys	16
Instrument Trolley – Two Drawer	AX069-G1	Instrument Trolleys	16
Instrument Trolley – Two Drawer	AX072-G1	Instrument Trolleys	16
Instrument Trolley – Two Drawer	AX075-G1	Instrument Trolleys	16
Instrument Trolley – Two Half Drawers	AX073-G1	Instrument Trolleys	16
IV Handle and Clamp	AX233	(A) General Ward	34
IV Pole – Smart IV stand	AX2380SS	General Ward	34
IV Pole – Stackable	AX218	General Ward	34
IV Pole / Stand	AX217	General Ward	34
IV Pole / Stand – Heavy Base	AX219	General Ward	34
IV Pole / Stand – Polymer Base	AX216	General Ward	34
IV pole and clamp	AX129	(A) Equipment Trolleys	21
IV Pole and Clamp	AX460	(A) General Ward	39
IV Set-up Trolley	AX145-G1	Equipment Trolleys	20
IV Transfusion Pump Stand	AX220	General Ward	34

## K

Kick Bucket – 11.4 L	AX244	Operating Theatre	32
Kick Bucket Lid	AX247	Operating Theatre	32
Kick Bucket Stand	AX241	Operating Theatre	32
Kick Bucket Stand - Complete	AX240	Operating Theatre	32
Kinguard Drying Rack	AX0681	CSSD	28

## L

Lead Apron Rack	AX177	General Ward	36
Leg Extension	AX447	(A) General Ward	39
Linen Skip – Colour Identification Strips – Blue	AX318B	(A) Linen & Supply	45
Linen Skip – Colour Identification Strips – Green	AX318G	(A) Linen & Supply	45
Linen Skip – Colour Identification Strips – Red	AX318R	(A) Linen & Supply	45
Linen Skip – Colour Identification Strips – Yellow	AX318Y	(A) Linen & Supply	45
Linen Skip – Double	AX300 PC	Linen & Supply	46

PRODUCT	CODE	(A) SECTION	PG
Linen Skip – Double – Half Height Shelf	AX300HHS	Linen & Supply	46
Linen Skip – Double – No lid	AX294	Linen & Supply	46
Linen Skip – Single – Half Height Shelf	AX320HHS	Linen & Supply	46
Linen Skip – Single – No lid	AX286	Linen & Supply	46
Linen Skip – Triple	AX307 PC	Linen & Supply	46
Linen Skip – Triple – No lid	AX303	Linen & Supply	46
Linen Skip – Single	AX291 PC	Linen & Supply	46
Linen Skip – Swivel Hooks	AX315	(A) Linen & Supply	46
Linen Skip – Half Height Shelf Only	AX320	(A) Linen & Supply	46
List Cart	AX278	CSSD	28
Lithotomy Table	AX260	Operating Theatre	30

## M

Mayo Table	AX252	Operating Theatre	30
Mayo Table	AX253	Operating Theatre	30
Mayo Table	AX254	Operating Theatre	30
Mayo Table	AX256	Operating Theatre	30
Medication Trolley – 1 Drawer	AX677-G1	Equipment Trolleys	20
Medication Trolley – 3 Drawer	AX676-G1	Equipment Trolleys	20
Moist Laundry Trolley	AX729	Linen & Supply	47
Moist Laundry Trolley	AX733	Linen & Supply	47
Mortuary Lifter Trolley	AX703	General Ward	40
Mortuary / Concealment Trolley	AX704	General Ward	40
Mortuary / Concealment Trolley Cover	AX707	General Ward	40
Mortuary Fixed Height Patient Trolley	AX708	General Ward	40
Multi Drawer Trolley	AX078-G1	Equipment Trolleys	19

## N

Nesting Table – Large	AX030	Operating Theatre	30
Nesting Table – Medium	AX027	Operating Theatre	30
Nesting Table – Set	AX021	Operating Theatre	30
Nesting Table – Small	AX021	Operating Theatre	30

## O

One Step Stool	AX390	Operating Theatre	31
One Step Stool	AX387	Operating Theatre	31
One Step Stool With Hand Rail	AX391	Operating Theatre	31
Oxygen Bottle Trolley C Size – Epoxy coated	AX537	General Ward	35
Oxygen Bottle Trolley C Size – Stainless steel	AX540	General Ward	35
Oxygen Bottle Trolley D Size – Epoxy coated	AX546	General Ward	35
Oxygen Bottle Trolley D Size – Stainless steel	AX549	General Ward	35
Oxygen Bottle Trolley G Size – Epoxy coated	AX528	General Ward	35
Oxygen Bottle Trolley G Size – Stainless steel	AX531	General Ward	35
Oxygen Cylinder Holder & Clamp	AX462	(A) General Ward	39

## P

Padded Backrest	AX444	(A) General Ward	39
Padded Enclosed Seat	AX438	(A) General Ward	39
Padded Open Front Seat	AX441	(A) General Ward	39
Pan and Bottle Rack – 4	AX554	General Ward	37
Pan and Bottle Rack – 6	AX552	General Ward	37
Paper Roll Holder	AX381	(A) Consulting Room	50
Plaster Trolley	AX4990	Operating Theatre	30
Power board	AX135	(A) Equipment Trolleys	21
Preparation Table – Mobile	AX654	Food Services	49
Preparation Table – Mobile	AX651	Food Services	49

PRODUCT	CODE	(A) SECTION	PG
Preparation Table – Mobile	AX648	Food Services	49
Preparation Table – Static	AX645	Food Services	49
Preparation Table – Static	AX642	Food Services	49
Preparation Table – Static	AX639	Food Services	49
Privacy Screen – Replacement Curtain 2 Fold	AX423CURT	Consulting Room	53
Privacy Screen – Replacement Curtain 3 Fold	AX414CURT	Consulting Room	53
Privacy Screen 2 fold	AX420	Consulting Room	53
Privacy Screen 3 fold	AX411	Consulting Room	53
Push handle to suit 400mm wide trolley	AX143	(A) Equipment Trolleys	21

## R

Removable Basket Trolley	AX199	Linen & Supply	48
Removable Basket Trolley – Replacement Basket	BASK0202	Linen & Supply	48
Resuscitation Trolley	AX107-G1	Instrument Trolleys	16
Resuscitation Trolley	AX110-G1	Equipment Trolleys	19
Resuscitation Trolley – Standard	AX108-G1	Equipment Trolleys	19

## S

Saddle Stool	AX2710	Operating Theatre	31
Safety Arms – Wrap Around	AX455	(A) General Ward	39
Self Closing Drawer Runner	AX738	(A) Equipment Trolleys	21
Shower Chair	AX432	General Ward	38
Shower Chair	AX432SA	General Ward	39
Shower Chair	AX433	General Ward	39
Single Bowl Stand	AX211	Operating Theatre	32
Single Bowl Stand	AX248	Operating Theatre	32
Single Linen Skip	AX291	Linen & Supply	45
Smart IV Stand	AX2380	General Ward	34
Spectra Trolley – 1 Drawer Trolley	AXS0010	Spectra Trolleys	23
Spectra Trolley – 2 Drawer Trolley	AXS0020	Spectra Trolleys	23
Spectra Trolley – 2 Shelf Trolley	AXS0001	Spectra Trolleys	23
Spectra Trolley – Multi Drawer Trolley	AXS0030	Spectra Trolleys	23
Spring Loaded Base Only	AX731	Linen & Supply	47
Step Stool – One Step	AX375G	Consulting Room	51
Step Stool – One Step with Hand Rail	AX378	Consulting Room	51
Step Stool – Two Step	AX393G	Consulting Room	51
Step Stool	AX402LHR	Consulting Room	51
Two Step with Hand Rail – Left			
Step Stool	AX402RHR	Consulting Room	51
Two Step with Hand Rail – Right			
Storage Basket and Clamp	AX231	(A) General Ward	34
Storage Panel 4 sml; 3 med; 1 lrg	AX132	(A) Equipment Trolleys	21
Storage Trolley	AX094	Linen & Supply	47
Surgeon Stool Foot Operated	AX267	Operating Theatre	31
Surgeon Stool Foot Operated	AX271	Operating Theatre	31
Surgeon Stool Hand Operated	AX262	Operating Theatre	31
Surgeon Stool Hand Operated	AX265	Operating Theatre	31
Swivel Hooks	AX315	Linen & Supply	45

## T

Theatre Supply Storage Cart	AX636	Operating Theatre	32
Tilt Bins	AX9122	General Ward	41
Tilt Bins	AX9124	General Ward	41
Tilt Bins	AX9126	General Ward	41
Tilt Bins	AX9128	General Ward	41
Transportation Trolley	AX0684	CSSD	28
Tray – 100mm deep	TTT106405-10101	Spectra Trolleys	22
Tray – 200mm deep	TTT106410-10101	Spectra Trolleys	22
Tray – 50mm deep	TTT106420-10101	Spectra Trolleys	22
Tray – Divider 100mm deep – 40cm long	TTT124010-10101	Spectra Trolleys	22
Tray – Divider 100mm deep – 60cm long	TTT126010-10101	Spectra Trolleys	22

PRODUCT	CODE	(A) SECTION	PG
Tray – Divider 200mm deep – 40cm long	TTT124020-10101	Spectra Trolleys	22
Tray – Divider 200mm deep – 60cm long	TTT126020-10101	Spectra Trolleys	22
Tray – Divider 50mm deep – 40cm long	TTT124005-10101	Spectra Trolleys	22
Tray – Divider 50mm deep – 60cm long	TTT126005-10101	Spectra Trolleys	22
Tray Trolley – Double	AX662	Food Services	49
Tray Trolley – Single	AX658	Food Services	49
Tray Trolley – Triple	AX665	Food Services	49
Triple Linen Skip	AX307	Linen & Supply	45
Two Step Stool	AX405	Operating Theatre	31

## U

Urinal Bottle Holder	AX513	General Ward	37
Urinal Bottle Holder	AX510	General Ward	37
Utility Trolley	AX091	Linen & Supply	47

## V

Vertical Oxygen Bottle Holder and Clamp	AX123	(A) Equipment Trolleys	21
Vertical Oxygen Holder and Clamp	AX232	(A) General Ward	34

## W

Waste Bin and Bracket	AX142	(A) Equipment Trolleys	21
Wet and Dry Laundry Trolley	AX726	Linen & Supply	47



# Index

## By Product Code

(A) = Accessory

PRODUCT	CODE	(A)	SECTION	PG
AX001-G1	Instrument Trolley – No Rail		Instrument Trolleys	16
AX003-G1	Instrument Trolley – No Rail		Instrument Trolleys	16
AX006-G1	Instrument Trolley – No Rail		Instrument Trolleys	16
AX009-G1	Instrument Trolley – No Rail		Instrument Trolleys	16
AX015-G1	Instrument Trolley – No Rail		Instrument Trolleys	16
AX018-G1	Instrument Trolley – No Rail		Instrument Trolleys	16
AX021	Nesting Table – Set		Operating Theatre	30
AX021	Nesting Table – Small		Operating Theatre	30
AX027	Nesting Table – Medium		Operating Theatre	30
AX030	Nesting Table – Large		Operating Theatre	30
AX033-G1	Instrument Trolley – Rail 3 Sides		Instrument Trolleys	16
AX036-G1	Instrument Trolley – Rail 3 Sides		Instrument Trolleys	16
AX039-G1	Instrument Trolley – Rail 3 Sides		Instrument Trolleys	16
AX042-G1	Instrument Trolley – Rail 3 Sides		Instrument Trolleys	16
AX048-G1	Instrument Trolley – Rail 3 Sides		Instrument Trolleys	16
AX051-G1	Instrument Trolley – Rail 3 Sides		Instrument Trolleys	16
AX054-G1	Instrument Trolley – One Drawer		Instrument Trolleys	16
AX057-G1	Instrument Trolley – One Drawer		Instrument Trolleys	16
AX060-G1	Instrument Trolley – One Drawer		Instrument Trolleys	16
AX063-G1	Instrument Trolley – One Drawer		Instrument Trolleys	16
AX066-G1	Instrument Trolley – Two Drawer		Instrument Trolleys	16
AX0667	CSSD Workstation – 1500mm long		CSSD	25
AX0681	Kimguard Drying Rack		CSSD	28
AX0684	Transportation Trolley		CSSD	28
AX0685	CSSD Workstation Kimguard Rack	(A)	CSSD	27
AX069-G1	Instrument Trolley – Two Drawer		Instrument Trolleys	16
AX0692	CSSD Workstation – 2000mm long		CSSD	25
AX0693	CSSD Workstation – 2300mm long		CSSD	25
AX0694	CSSD Workstation Magnifying Light	(A)	CSSD	27
AX0695	CSSD Workstation Drawer Unit	(A)	CSSD	27
AX0696	CSSD Workstation Monitor Holder	(A)	CSSD	27
AX0697	CSSD Workstation Under Bench Shelving	(A)	CSSD	27
AX0698	CSSD Workstation Accessory Shelf	(A)	CSSD	27
AX0699	CSSD Workstation Underbench Basket System	(A)	CSSD	27
AX0700	CSSD Workstation Pull-out shelf	(A)	CSSD	27
AX072-G1	Instrument Trolley – Two Drawer		Instrument Trolleys	16
AX073-G1	Instrument Trolley – Two Half Drawers		Instrument Trolleys	16
AX075-G1	Instrument Trolley – Two Drawer		Instrument Trolleys	16
AX076-G1	Instrument Trolley – Three Drawer		Instrument Trolleys	16
AX077-G1	Instrument Trolley – Three Drawer		Instrument Trolleys	16
AX078-G1	Multi Drawer Trolley		Equipment Trolleys	19
AX0780-G1	Instrument Trolley – Three Drawer		Instrument Trolleys	16
AX079-G1	Instrument Trolley – Three Drawer		Instrument Trolleys	16
AX080-G1	Instrument Trolley – Four Drawer		Instrument Trolleys	16
AX081-G1	Instrument Trolley – Four Drawer		Instrument Trolleys	16
AX082-G1	Instrument Trolley – Four Drawer		Instrument Trolleys	16
AX083-G1	Instrument Trolley – Four Drawer		Instrument Trolleys	16
AX091	Utility Trolley		Linen & Supply	47
AX094	Storage Trolley		Linen & Supply	47
AX102	Anaesthetic Trolley		Equipment Trolleys	19
AX104	Anaesthetic Trolley		Equipment Trolleys	19
AX105	Anaesthetic Trolley		Equipment Trolleys	19
AX106	Airway Trolley		Operating Theatre	30
AX107-G1	Resuscitation Trolley		Instrument Trolleys	16
AX108-G1	Resuscitation Trolley - Standard		Equipment Trolleys	19
AX110-G1	Resuscitation Trolley		Equipment Trolleys	19
AX113	Arm Table		Operating Theatre	30
AX114-G1	Anaesthetic Trolley		Equipment Trolleys	19

PRODUCT	CODE	(A)	SECTION	PG
AX115-G1	Emergency Equipment Trolley		Equipment Trolleys	20
AX117-G1	Emergency Equipment Trolley		Equipment Trolleys	20
AX119-G1	Emergency Equipment Trolley		Equipment Trolleys	20
AX120	Drawer insert containers 12 units	(A)	Equipment Trolleys	21
AX123	Vertical Oxy Bottle Holder and Clamp	(A)	Equipment Trolleys	21
AX126	Drop down work surface	(A)	Equipment Trolleys	21
AX129	IV pole and clamp	(A)	Equipment Trolleys	21
AX132	Storage panel 4 sml; 3 med; 1 lrg	(A)	Equipment Trolleys	21
AX135	Power board	(A)	Equipment Trolleys	21
AX142	Waste Bin and Bracket	(A)	Equipment Trolleys	21
AX143	Push Handle to Suit 400mm Wide Trolley	(A)	Equipment Trolleys	21
AX145	IV Set-up Trolley		Equipment Trolleys	20
AX147	Clearing Trolley – 2 Dished Shelves		Food Services	49
AX150	Clearing Trolley – 3 Dished Shelves		Food Services	49
AX175	Garment Rack		General Ward	36
AX177	Lead Apron Rack		General Ward	36
AX178	Coat Hangers		General Ward	36
AX190	Imprest Trolley – Mesh Powder Coat		Linen & Supply	48
AX190SS	Imprest Trolley – Mesh Stainless Steel		Linen & Supply	48
AX191	Imprest Trolley		Linen & Supply	48
AX199	Removable Basket Trolley		Linen & Supply	48
AX205	Fixed Basket Trolley		Linen & Supply	48
AX211	Single Bowl Stand		Operating Theatre	32
AX214	Double Bowl Stand		Operating Theatre	32
AX216	IV Pole / Stand – Polymer Base		General Ward	34
AX217	IV Pole / Stand		General Ward	34
AX218	IV Pole – Stackable		General Ward	34
AX219	IV Pole / Stand – Heavy Base		General Ward	34
AX220	IV Transfusion Pump Stand		General Ward	34
AX231	Storage Basket and Clamp	(A)	General Ward	34
AX232	Vertical Oxy Holder and Clamp	(A)	General Ward	34
AX233	IV Handle and Clamp	(A)	General Ward	34
AX2380	Smart IV Stand		General Ward	34
AX2380SS	IV Pole – Smart IV stand		General Ward	34
AX240	Kick Bucket Stand – Complete		Operating Theatre	32
AX241	Kick Bucket Stand		Operating Theatre	32
AX244	Kick Bucket – 11.4 L		Operating Theatre	32
AX247	Kick Bucket Lid		Operating Theatre	32
AX248	Single Bowl Stand		Operating Theatre	32
AX252	Mayo Table		Operating Theatre	30
AX253	Mayo Table		Operating Theatre	30
AX254	Mayo Table		Operating Theatre	30
AX256	Mayo Table		Operating Theatre	30
AX260	Lithotomy Table		Operating Theatre	30
AX262	Surgeon Stool Hand Operated		Operating Theatre	31
AX265	Surgeon Stool Hand Operated		Operating Theatre	31
AX267	Surgeon Stool Foot Operated		Operating Theatre	31
AX271	Surgeon Stool Foot Operated		Operating Theatre	31
AX2710	Saddle Stool		Operating Theatre	31
AX278	List Cart		CSSD	28
AX286	Linen Skip – Single – No lid		Linen & Supply	46
AX291	Single Linen Skip		Linen & Supply	45
AX291 PC	Linen Skip – Single		Linen & Supply	46
AX294	Linen Skip – Double – No lid		Linen & Supply	46
AX300	Double Linen Skip		Linen & Supply	45
AX300 PC	Linen Skip – Double		Linen & Supply	46
AX300HHS	Linen Skip – Double – Half Height Shelf		Linen & Supply	46
AX303	Linen Skip – Triple – No lid		Linen & Supply	46
AX307	Triple Linen Skip		Linen & Supply	45
AX307 PC	Linen Skip – Triple		Linen & Supply	46
AX315	Linen Skip – Swivel Hooks	(A)	Linen & Supply	46
AX315	Swivel Hooks		Linen & Supply	45
AX318B	Linen Skip Colour Identification Strips – Blue	(A)	Linen & Supply	45
AX318G	Linen Skip Colour Identification Strips – Green	(A)	Linen & Supply	45
AX318R	Linen Skip Colour Identification Strips – Red	(A)	Linen & Supply	45

PRODUCT	CODE	(A) SECTION	PG
AX318Y	Linen Skip – Colour Identification Strips – Yellow	(A) Linen & Supply	45
AX320	Linen Skip – Half Height Shelf Only	(A) Linen & Supply	46
AX320HHS	Linen Skip – Single – Half Height Shelf	Linen & Supply	46
AX321	Instrument Trolley – Powder Coated	Consulting Room	51
AX324	Instrument Trolley – 1 Drawer – Powder Coated	Consulting Room	51
AX327	Instrument Trolley – 2 Drawer – Powder Coated	Consulting Room	51
AX330	Instrument Trolley – Powder Coated	Consulting Room	51
AX333	Instrument Trolley – 1 Drawer – Powder Coated	Consulting Room	51
AX336	Instrument Trolley – 2 Drawer – Powder Coated	Consulting Room	51
AX342	Instrument Trolley – Nova	Consulting Room	52
AX345	Instrument Trolley – 1 Drawer – Nova	Consulting Room	52
AX348	Instrument Trolley – 2 Drawer – Nova	Consulting Room	52
AX349	Instrument Trolley – 3 Drawer – Nova	Consulting Room	52
AX357G	Examination Couch	Consulting Room	50
AX375G	Step Stool – One Step	Consulting Room	51
AX378	Step Stool – One Step with Hand Rail	Consulting Room	51
AX381	Paper Roll Holder	(A) Consulting Room	50
AX382	Examination Couch 3 Drawer Unit	Consulting Room	50
AX385	Examination Couch Heavy Duty	Consulting Room	50
AX387	One Step Stool	Operating Theatre	31
AX390	One Step Stool	Operating Theatre	31
AX391	One Step Stool With Hand Rail	Operating Theatre	31
AX393G	Step Stool – Two Step	Consulting Room	51
AX402LHR	Step Stool – Two Step with Hand Rail – Left	Consulting Room	51
AX402RHR	Step Stool – Two Step with Hand Rail – Right	Consulting Room	51
AX405	Two Step Stool	Operating Theatre	31
AX411	Privacy Screen 3 Fold	Consulting Room	53
AX414CURT	Privacy Screen – Replacement Curtain 3 Fold	Consulting Room	53
AX420	Privacy Screen 2 Fold	Consulting Room	53
AX423CURT	Privacy Screen – Replacement Curtain 2 fold	Consulting Room	53
AX432	Shower Chair	General Ward	38
AX432SA	Shower Chair	General Ward	39
AX433	Shower Chair	General Ward	39
AX435	Bariatric Shower Chair	General Ward	39
AX436	Hinged Padded Seat	(A) General Ward	39
AX438	Padded Enclosed Seat	(A) General Ward	39
AX441	Padded Open Front Seat	(A) General Ward	39
AX444	Padded Backrest	(A) General Ward	39
AX447	Leg Extension	(A) General Ward	39
AX455	Safety Arms – Wrap Around	(A) General Ward	39
AX460	IV Pole and Clamp	(A) General Ward	39
AX462	Oxygen Cylinder Holder & Clamp	(A) General Ward	39
AX468	Blood Collection Chair	Consulting Room	53
AX473	Blood Collection Chair	Consulting Room	53
AX4990	Plaster Trolley	Operating Theatre	30
AX501	Bed Cradle	General Ward	37
AX510	Urinal Bottle Holder	General Ward	37
AX513	Urinal Bottle Holder	General Ward	37
AX519	Garbage Trolley	General Ward	35
AX520	Garbage Trolley	General Ward	35
AX520NL	Garbage Trolley	General Ward	35
AX524	Gas Cylinder Trolley – 9x	General Ward	35
AX524SS	Gas Cylinder Trolley Stainless Steel – 9x	General Ward	35
AX525	Gas Cylinder Trolley – 12 x	General Ward	35
AX525SS	Gas Cylinder Trolley Stainless Steel – 12 x	General Ward	35
AX528	Oxygen Bottle Trolley G Size – Epoxy Coated	General Ward	35
AX531	Oxygen Bottle Trolley G Size – Stainless Steel	General Ward	35
AX534	Gas Bottle Holder	General Ward	37

PRODUCT	CODE	(A) SECTION	PG
AX537	Oxygen Bottle Trolley C Size – Epoxy Coated	General Ward	35
AX540	Oxygen Bottle Trolley C Size – Stainless Steel	General Ward	35
AX543	Gas Bottle Holder	General Ward	37
AX546	Oxygen Bottle Trolley D Size – Epoxy Coated	General Ward	35
AX549	Oxygen Bottle Trolley D Size – Stainless Steel	General Ward	35
AX552	Pan and Bottle Rack – 6	General Ward	37
AX554	Pan and Bottle Rack – 4	General Ward	37
AX582	Bassinet Trolley – Single	Maternity	43
AX597	Bassinet Trolley – Twin	Maternity	43
AX607	Bassinet Trolley – Single – Stainless Steel Frame	Maternity	43
AX608	Bassinet Trolley – Twin – Stainless Steel Frame	Maternity	43
AX609	Bassinet Trolley – Single	Maternity	43
AX610	Babies Bath	Maternity	43
AX611	Acrylic Tub Only	Maternity	43
AX612	Bassinet Trolley – Cabinet	Maternity	43
AX625	Clearing Trolley – 2 break shelves	Food Services	49
AX627	Clearing Trolley – 3 break shelves	Food Services	49
AX634	Bulk Collection Trolley	Linen & Supply	47
AX636	Theatre Supply Storage Cart	Operating Theatre	32
AX639	Preparation Table – Static	Food Services	49
AX642	Preparation Table – Static	Food Services	49
AX645	Preparation Table – Static	Food Services	49
AX648	Preparation Table – Mobile	Food Services	49
AX651	Preparation Table – Mobile	Food Services	49
AX654	Preparation Table – Mobile	Food Services	49
AX658	Tray Trolley – Single	Food Services	49
AX662	Tray Trolley – Double	Food Services	49
AX665	Tray Trolley – Triple	Food Services	49
AX676	Medication Trolley – 3 Drawer	Equipment Trolleys	20
AX677	Medication Trolley – 1 Drawer	Equipment Trolleys	20
AX692	Case Cart	CSSD	28
AX701	ICU Workstations – 750 x 620mm Writing Surface	Operating Theatre	32
AX703	Mortuary Lifter Trolley	General Ward	40
AX704	Mortuary / Concealment Trolley	General Ward	40
AX707	Mortuary / Concealment Trolley Cover	General Ward	40
AX708	Mortuary Fixed Height Patient Trolley	General Ward	40
AX723	Distribution Trolley	Linen & Supply	48
AX726	Wet and Dry Laundry Trolley	Linen & Supply	47
AX729	Moist Laundry Trolley	Linen & Supply	47
AX731	Spring Loaded Base Only	Linen & Supply	47
AX733	Moist Laundry Trolley	Linen & Supply	47
AX738	Self Closing Drawer Runner	(A) Equipment Trolleys	21
AX764	ICU Workstations – 900 X 620mm Writing Surface	Operating Theatre	32
AX765	ICU Workstations – 870 x 670mm Writing Surface	Operating Theatre	32
AX9122	Tilt Bins	General Ward	41
AX9124	Tilt Bins	General Ward	41
AX9126	Tilt Bins	General Ward	41
AX9128	Tilt Bins	General Ward	41
AX9136	Document Holders	General Ward	41
AX9140	Document Holders	General Ward	41
AX9142	Document Holders	General Ward	41
AX9144	Document Holders	General Ward	41
AX9146	Document Holders	General Ward	41
AX990	Charts Trolley – 12 Charts	General Ward	36
AX993	Charts Trolley – 24 Charts	General Ward	36
AX994	Charts Trolley – 36 Charts	General Ward	36
AX996	Chart Holder A4	General Ward	36
AXS0001	Spectra Trolley – 2 Shelf Trolley	Spectra Trolleys	23
AXS0010	Spectra Trolley – 1 Drawer Trolley	Spectra Trolleys	23
AXS0020	Spectra Trolley – 2 Drawer Trolley	Spectra Trolleys	23
AXS0030	Spectra Trolley – Multi Drawer Trolley	Spectra Trolleys	23
BASK0202	Removable Basket Trolley – Replacement Basket	Linen & Supply	48
R2500	Distribution Trolley 16 compartment	Linen & Supply	48

PRODUCT	CODE	(A) SECTION	PG
R2510	Distribution Trolley 18 compartment	Linen & Supply	48
R2520	Distribution Trolley 24 compartment	Linen & Supply	48
R2530	Distribution Trolley 32 compartment	Linen & Supply	48
TTT106405-10101	Tray – 100mm deep	Spectra Trolleys	22
TTT106410-10101	Tray – 200mm deep	Spectra Trolleys	22
TTT106420-10101	Tray – 50mm deep	Spectra Trolleys	22
TTT124005-10101	Tray – Divider 50mm deep – 40cm long	Spectra Trolleys	22
TTT124010-10101	Tray – Divider 100mm deep – 40cm long	Spectra Trolleys	22
TTT124020-10101	Tray – Divider 200mm deep – 40cm long	Spectra Trolleys	22
TTT126005-10101	Tray – Divider 50mm deep – 60cm long	Spectra Trolleys	22
TTT126010-10101	Tray – Divider 100mm deep – 60cm long	Spectra Trolleys	22
TTT126020-10101	Tray – Divider 200mm deep – 60cm long	Spectra Trolleys	22



**T** +61 (3) 9922 0300  
**F** +61 (3) 9544 5392

**W** [www.axishealth.com.au](http://www.axishealth.com.au)