

NEW

Axis Health Medical Carts Range

Emergency Cart

Our ALL NEW Emergency Cart helps you better organize medical supplies and devices for life-threatening scenarios in hospitals.

The EX Series features particularly the armor like aluminum frame designed to resist bumping during operation.

FEATURES

- All-around armor like aluminum bumper
- Sliding table for extended working area
- Central key locking system
- Soft-return ball bearing drawer slides
- Tool-free accessory bar when adjusting
- Raised front rim of worktop
- Built with metal sheet with powder coating
- Worktop also available in stainless-steel
- Patented magnetic breakaway lock for drawers
- Breakaway lock options:

Quiet Lock Bar



Quiet Breakaway Lock



SPECIFICATIONS



EX31EMG



EX34EMG



EX37EMG

Width	671 mm	26.4 inch	671 mm	26.4 inch	671 mm	26.4 inch
Depth	545 mm	21.4 inch	545 mm	21.4 inch	545 mm	21.4 inch
Height	938 mm	37 inch	1017 mm	40 inch	1096 mm	43.1 inch
H(w/o 5" Casters)	785 mm	31 inch	864 mm	34 inch	943 mm	37 inch

ACCESSORIES:

- **SXIV**- IV pole
- **SXDS**- Defibrillator Shelf
- **SCPR**- CPR board w/ Hooks
- **SXO2**- Oxygen tank holder
- **SXSC**- Sharps container

Disclaimer: All images are included for reference only. Goods supplied may vary from those illustrated due to continual improvements and/or regulation changes.

Phone Number

03 9922 0300

Email Address

info@axishealth.com.au

Website

www.axishealth.com.au

Office Address

46-50 Brindley St, Dandenong Sth 3175

NEW

Axis Health Medical Carts Range

Anesthesia Cart

Our ALL NEW Anesthesia Cart provides multi-function solutions to secure control drugs and sort medications for anesthesia department within one mobile unit.

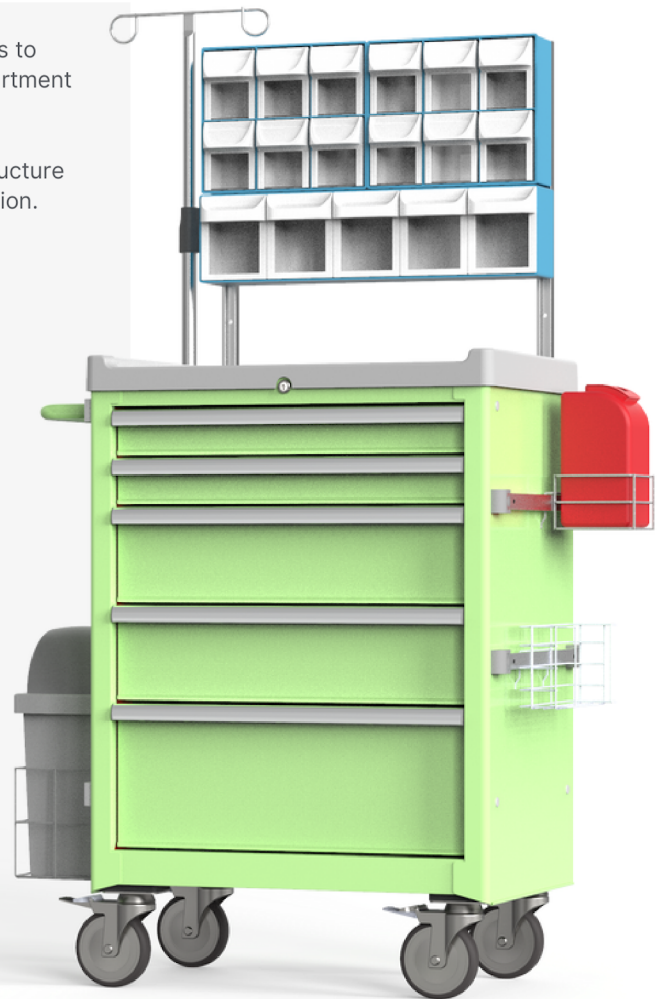
The EX Series features particularly the armor like aluminum structure wrapped around the cart body to resist bumping during operation.

FEATURES

- All-around armor like aluminum bumper
- Sliding table for extended working area
- Central key locking system
- Soft-return ball bearing drawer slides
- Tool-free accessory bar when adjusting
- Raised front rim of worktop
- Built with metal sheet with powder coating
- Worktop also available in stainless-steel

AVAILABLE ACCESORIES

- **SXIV**- IV pole
- **SXSC**- Storage Container
- **SXAB**- Accessory bridge
- **STB-2**- Tilt bin organizer (S)
- **STB-1**- Tilt bin organizer (L)
- **SXGD**- Glove dispenser
- **SXFW**- Waste bin with foot pedal



SPECIFICATIONS



EX31ANE



EX34ANE



EX37ANE

Width	671 mm	26.4 inch	671 mm	26.4 inch	671 mm	26.4 inch
Depth	545 mm	21.4 inch	545 mm	21.4 inch	545 mm	21.4 inch
Height	938 mm	37 inch	1017mm	40 inch	1096mm	43.1 inch
H(w/o 5" Casters)	785 mm	31 inch	864 mm	34 inch	943 mm	37 inch

Disclaimer: All images are included for reference only. Goods supplied may vary from those illustrated due to continual improvements and/or regulation changes.

Phone Number

03 9922 0300

Email Address

info@axishealth.com.au

Website

www.axishealth.com.au

Office Address

46-50 Brindley St, Dandenong Sth 3175

NEW

Axis Health Medical Carts Range

Procedure Cart

Our ALL NEW Procedure Cart offers maximum flexibility to solve your organization needs during routine rounds.

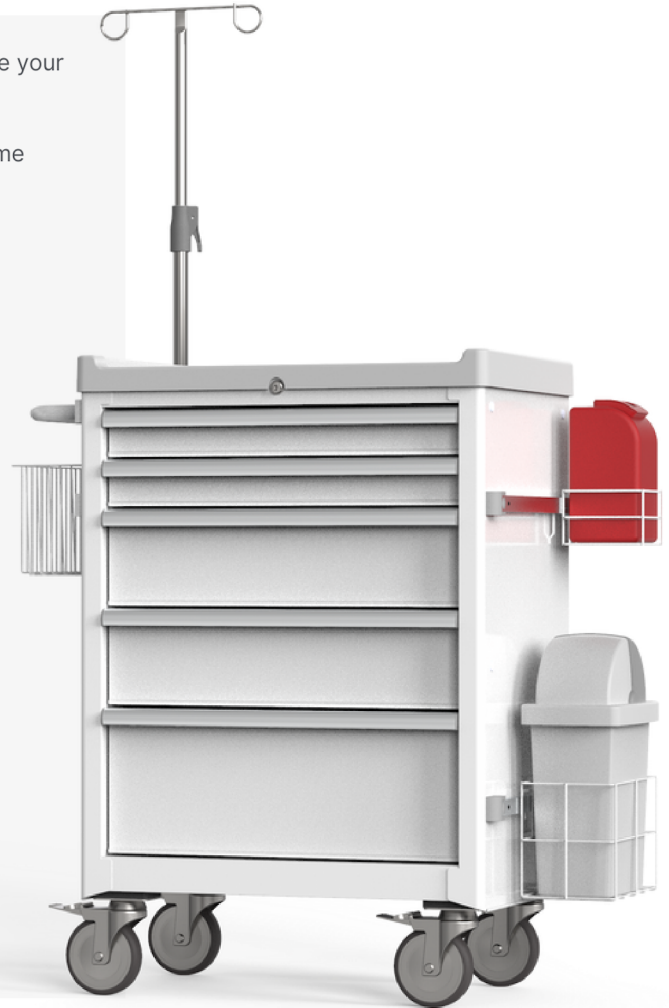
The EX Series features particularly the armor like aluminum frame designed to resist bumping during operation.

FEATURES

- All-around armor like aluminum bumper
- Sliding table for extended working area
- Central key locking system
- Soft-return ball bearing drawer slides
- Tool-free accessory bar when adjusting
- Raised front rim of worktop
- Built with metal sheet with powder coating
- Worktop also available in stainless-steel

AVAILABLE ACCESSORIES

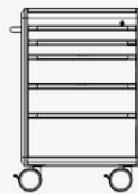
- **SXIV**- IV pole
- **SXMS**- Storage Container
- **SXSC**- Sharps container
- **SXFW**- Waste bin with foot pedal



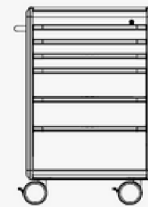
SPECIFICATIONS



EX31PRO



EX34PRO



EX37PRO

Width	671 mm	26.4 inch	671 mm	26.4 inch	671 mm	26.4 inch
Depth	545 mm	21.4 inch	545 mm	21.4 inch	545 mm	21.4 inch
Height	938 mm	37 inch	1017mm	40 inch	1096mm	43.1 inch
H(w/o 5" Casters)	785 mm	31 inch	864 mm	34 inch	943 mm	37 inch

Disclaimer: All images are included for reference only. Goods supplied may vary from those illustrated due to continual improvements and/or regulation changes.

Phone Number

03 9922 0300

Email Address

info@axishealth.com.au

Website

www.axishealth.com.au

Office Address

46-50 Brindley St, Dandenong Sth 3175